

CHESS

REGISTER ONLINE AT: [HTTPS://WEB2.VERMONTSYSTEMS.COM/NICOLET.HTML](https://web2.vermontsystems.com/nicolet.html)

CHESS CAMP

Develop your child's intellect through the royal game of chess! Current research has shown a strong link between chess and academic performance in a variety of areas, including mathematics and language arts. Chess has been proven to enhance children's motivation, concentration, focus, social skills, and creativity.

Each class will consist of a fun, interactive teaching period and guided practice time. Both beginner and experienced players are welcome and will learn under the guidance of an experienced Chess Scholars coach.

Date: June 17 - 20
Day: Monday - Thursday
Time: 12:30 - 3:30pm
Location: Maple Dale School
Grade: K - 8th (grade as of Fall 2024)
Fee: \$160.00R/\$180.00NR
Program#: 312161-01
Min/Max: 8/16
Instructor: Chess Scholars Staff

WISCONSIN SCHOLASTIC CHESS FEDERATION (WSCF) CHESS CAMP

Beginner Chess Camp: This class is for those new to chess or with ratings less than 800 who want to improve their chess skills. Students will work on opening game strategies and tactics. Focus on chess fundamentals including opening strategy, the 5 basic checkmates, and tactics such as Forks, Pins and Discovered Check. Students will experience a balance of chess play and instruction. They compete in a 5-round tournament with the top 3 players winning trophies and everyone else receiving a medal. In the Intermediate class all phases of the game will be covered including chess notation and game analysis. Those that have played two to three years are recommended to take the intermediate class.

(Intermediate) This class is for experienced players with many years of tournament experience and with WSCF or USCF ratings over 800 or with instructor permission. All phases of the game will be covered in this class. Focus on chess fundamentals including opening strategy, the 5 basic checkmates, and tactics such as Forks, Pins and Discovered Check. Students will experience a balance of chess play and instruction. They compete in a 5-round tournament with the top 3 players winning trophies and everyone else receiving a medal. In the Intermediate class all phases of the game will be covered including chess notation and game analysis.

Date: June 10 - 13
Day: Monday - Thursday
Location: Maple Dale School
Fee: \$90.00R/\$100.00NR
Min/Max: 10/24
Instructor: WSCF Staff

Session:	Grade:	Time:	Program#:
Beginner	2nd - 8th	9:00am - 12noon	312160-01
Intermediate	2nd - 12th	1:00 - 4:00pm	312160-02



Nicolet Recreation Department
6701 N. Jean Nicolet Rd.
Glendale, WI 53217

Phone: (414) 351-7566
Fax: (414) 351-4053



<https://www.nicolet.us/page/nicolet-recreation-department>



2024 Season!



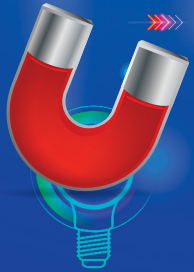
Club SciKidz

Where Science & Technology Connect!

It's a Gift!



Our Summer Day Camps introduce young children to the mysteries of science through hands-on interactive make-and-take projects and experiments. Your child will be receiving a gift that will last a lifetime.



SUMMER SCIENCE DAY CAMPS

Please go to our website to see our complete selection!

Our Camps appeal to children who have a genuine interest in how things work, what things are made of and how science works in the real world. All of our lessons meet or exceed the National Science Standards.

Club SciKidz 2024 Summer Camp Themes Grades Pre-K through 7th (4 -Year-Old Half-Day Program)

FEATURED STEM CAMPS



**American Doll:
Grades 1st-5th**



Minecraft



**Veterinary
Medicine**



Grossology



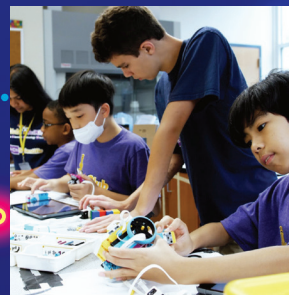
**Pokemon
Professors**



**Little
Scientist**



**Nintendo
LABO**



**Robot
Engineer**



**Advanced LEGO
with Spike**

Please go to our website for prices and options.
GreaterMilwaukee.ClubSciKidz.com

Camps Operate Monday - Friday, 9am to 4pm

Before & After Care Available

Pre-Camp begins at 8am • Post-Camp ends at 5:30pm

